



Commissioning Support  
for London

# Commissioning for Quality and Innovation

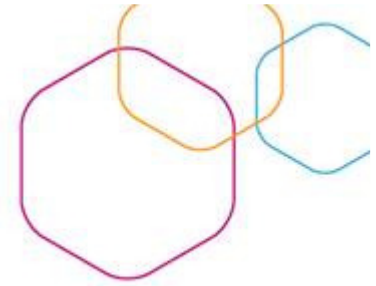
CQUIN

Date: 8 December 2010



Providing clinical and business support to London's NHS

# Background



- Introduced in 2009/10 for acute contracts
- ...to make a proportion of providers' income conditional on quality and innovation
- Mandatory for mental health contracts from 2010/11
- Schemes had to include at least one area for improvement in each of these domains

Safety

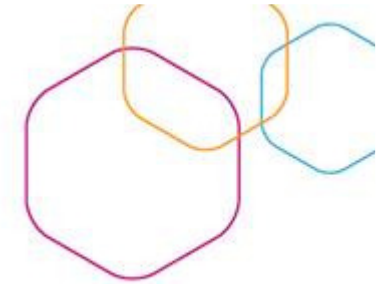
Effectiveness (clinical outcomes and patient reported outcomes)

User experience

Innovation



# 2010/11 Guidance



DH set two national indicators (non-MH)

- to reduce impact of Venous-thromboembolism (VTE)
- Improve responsiveness to personal needs of patients

Asked SHAs to develop regional indicators and coordinate process

Proportion of overall income increased from 0.5% to 1.5%

No inflationary uplift

One scheme per provider

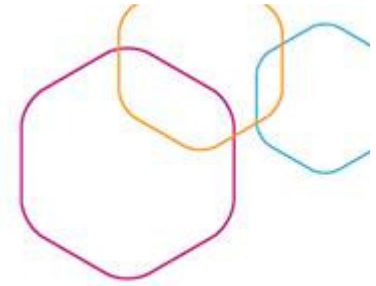
Stressed need for schemes to be ambitious and stretching

Stressed that indicators must not duplicate existing contractual requirements

\*You can just highlight and delete the footnote or source text positioned here if it is not needed.



# 2010/11 Regional Indicators



To improve the physical health care of patients with mental health problems

Establish baseline information on prescribing of antipsychotics for people with dementia

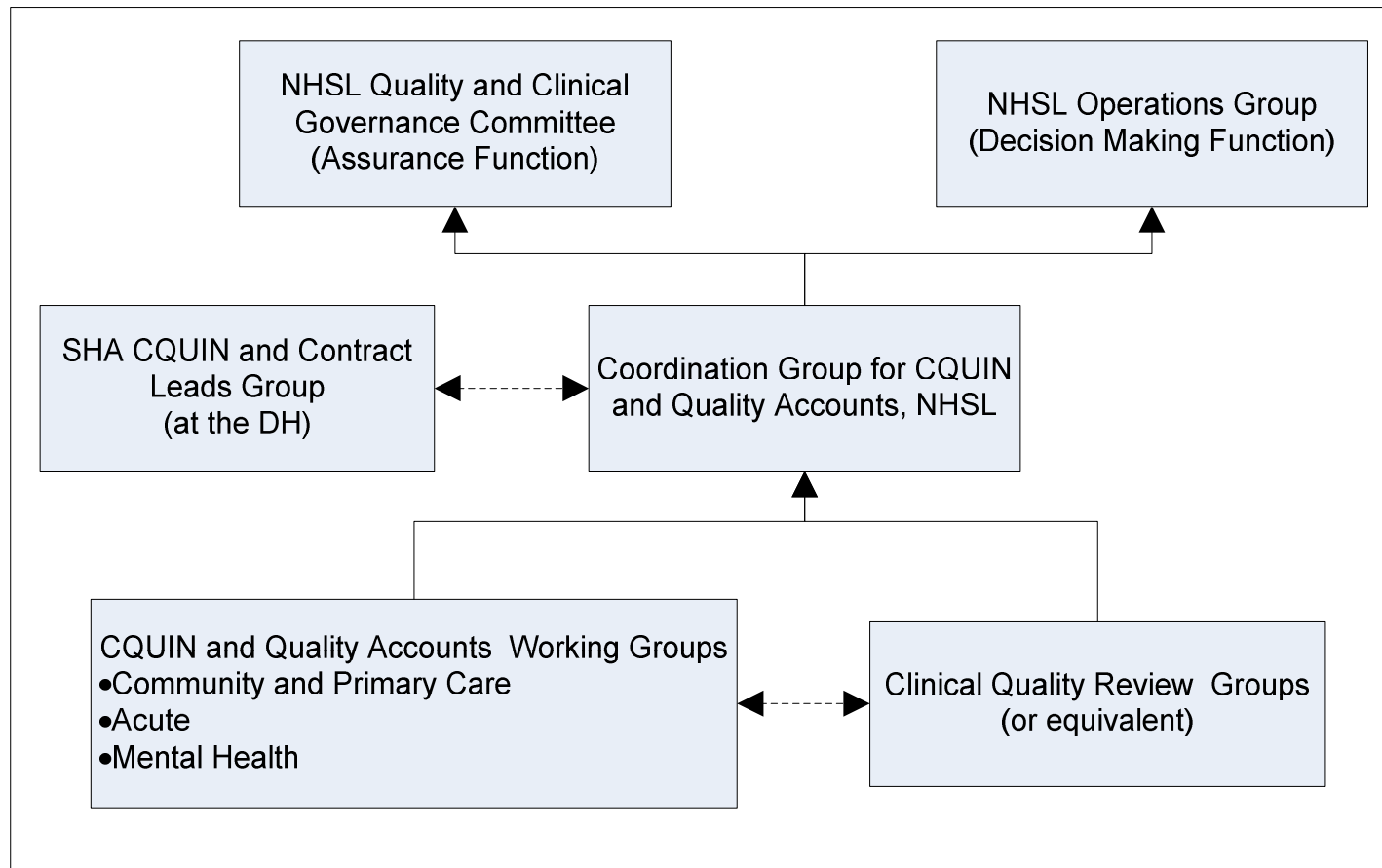
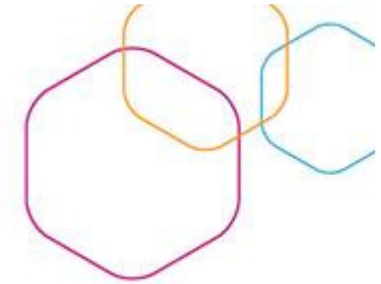
To improve the collection and reporting of currency data which will inform future service improvements

plus

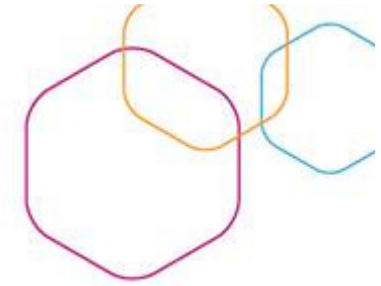
Achievement of milestones in National Dementia Strategy included in acute scheme



# 2011/12 Process



# 2011/12 Latest News



Most SHA's are not mandating regional CQUINs – just creating pick list of exemplars – London position under discussion

2 national CQUINs to carry over, no other nationally mandated ones expected

Key message – keep them simple with less in-year transactional process

CQUIN team at DH winding down

DH suggests a reasonable number of goals between 6 and 10 (inclusive of the two nationally mandated)

Weighting of individual goals to be agreed by lead commissioner

